

# CORNELIS

---

TYPE C2

BUILDING NUMBERS: 206

207

208

209

- GFA approx. 138 sqm
- F.O.B. € 825.000,-  
based on annual ground rent € 3409,-
- Buyout price € 142.651,-
- Prepetual leasehold
- Ex. Parking space





---

## C2

---

*“Spacious family maisonettes on the first and second floor with surface areas of approximately 138 sqm. The entrance is located on the second floor, where the first bedroom and bathroom are situated.”*

**CORNELIS**

---

## C2

---

*“The spacious hallway leads to the first floor, which accommodates the living room and kitchen. Adjacent to the kitchen is a corridor that is perfectly suited as a home office space, for doing homework, or for gaming. On this floor, there are also two additional bedrooms and a bathroom.”*

**CORNELIS**





---

## C2

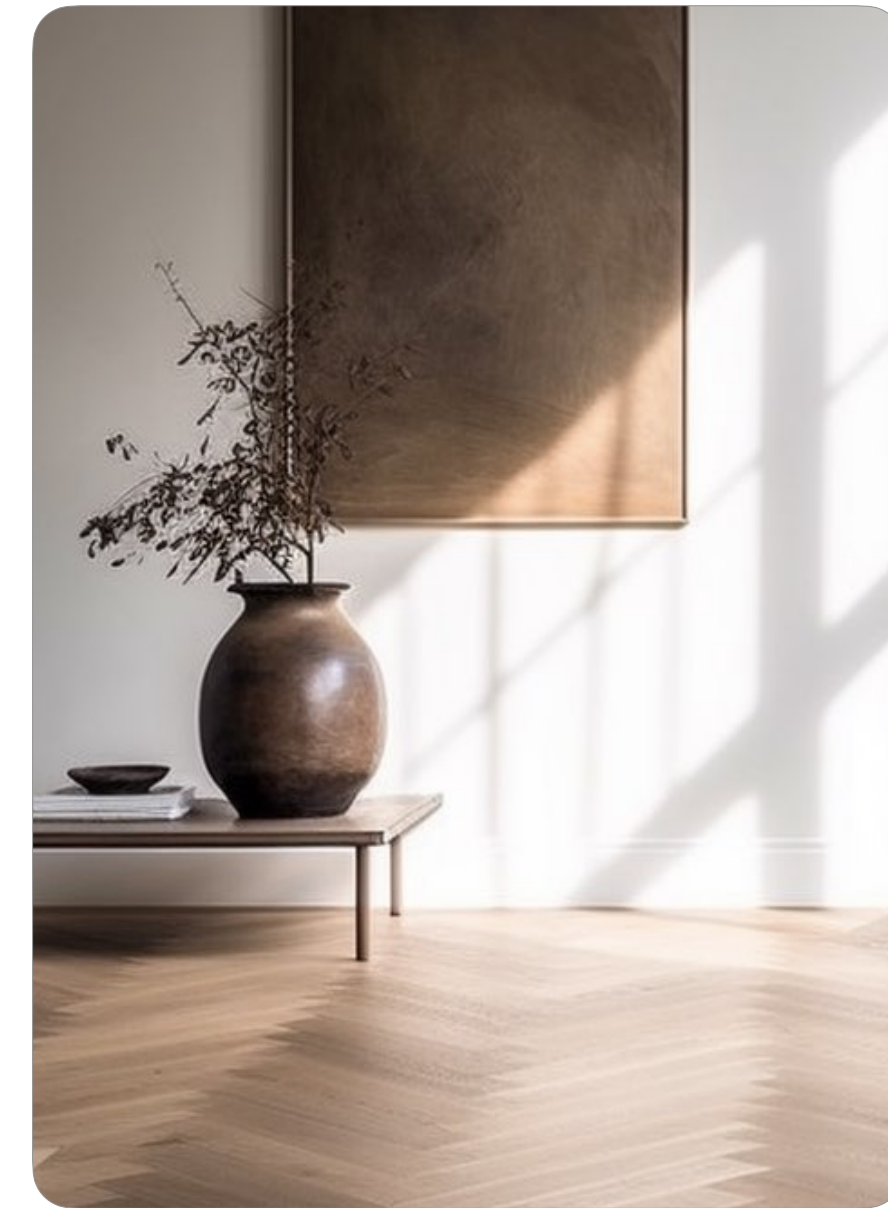
---

*"These apartments naturally include their own outdoor space. It's the perfect spot to unwind and recharge, whether it's with family or neighbors."*

**CORNELIS**



LIVING ROOM





KITCHEN /  
DINING

---

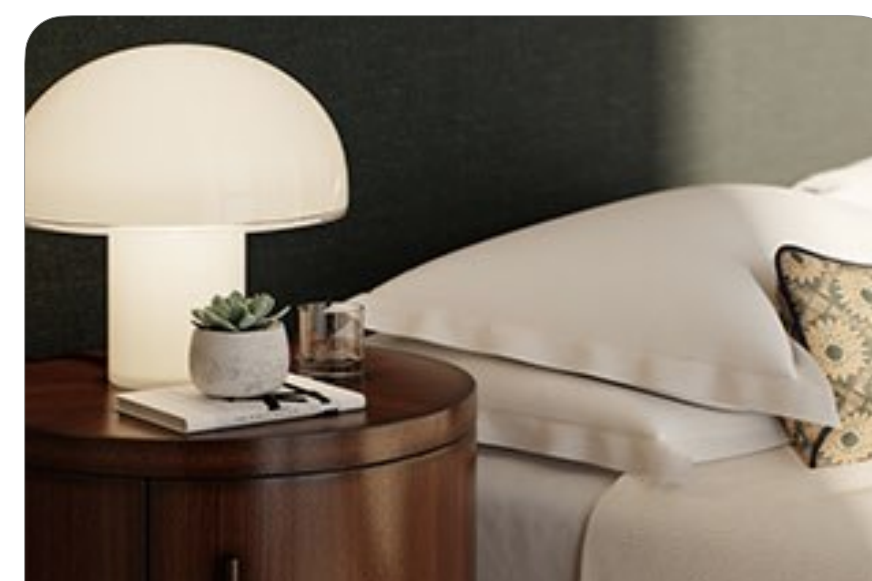




STUDY



BEDROOM

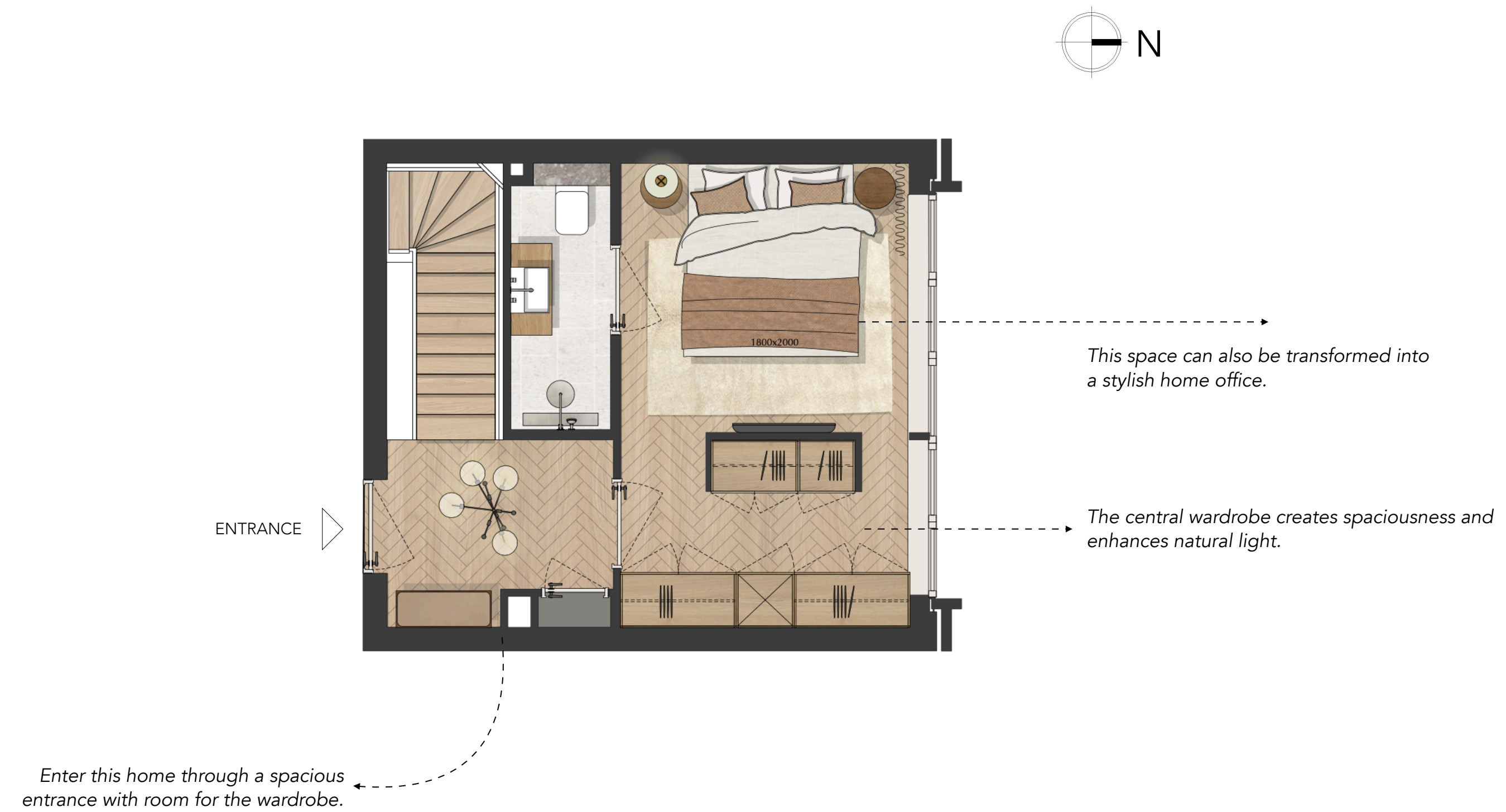




# FLOORPLAN

CORNELIS

## SECOND FLOOR

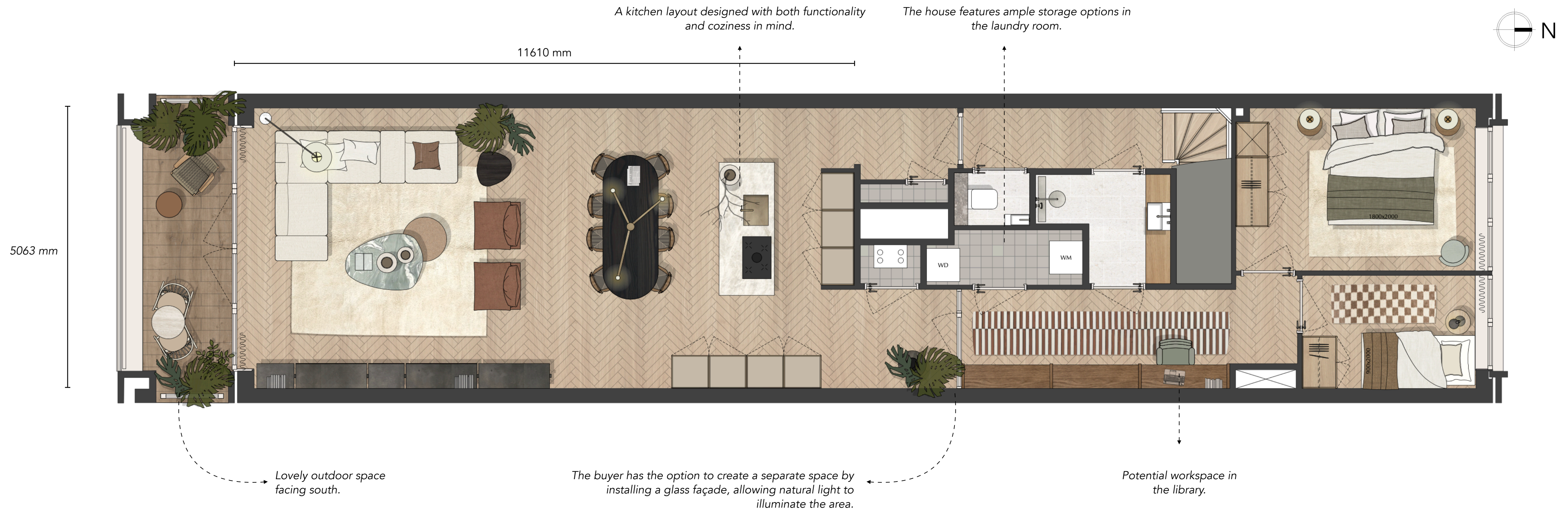


\* Property 207 and property 209 are mirrored

# FLOORPLAN

CORNELIS

## FIRST FLOOR - PROPOSAL A

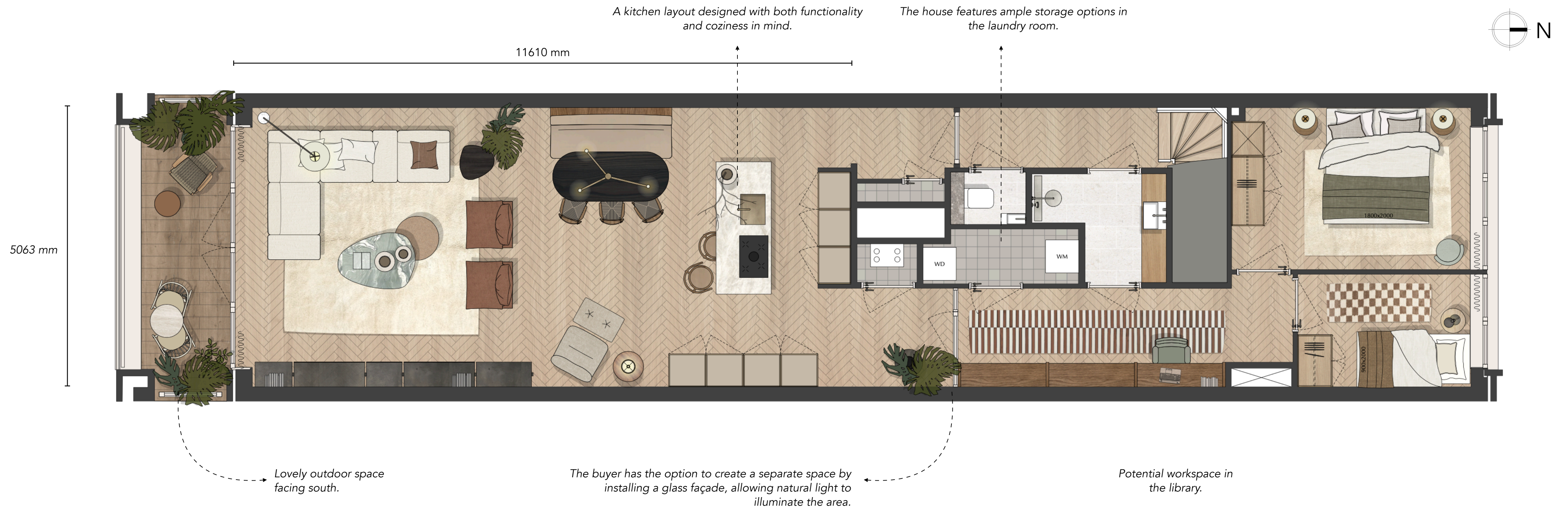


\* Property 207 and property 209 are mirrored

# FLOORPLAN

CORNELIS

## FIRST FLOOR - PROPOSAL B



\* Property 207 and property 209 are mirrored



SENSE Vastgoed  
Willemsparkweg 221 | 1071 HC Amsterdam  
[info@sensevastgoed.nl](mailto:info@sensevastgoed.nl) | +31 (0) 20 471 19 04



KRK Makelaars  
Purperhoedenveem 7 | 1019 HE Amsterdam  
[amsterdam@krk.nl](mailto:amsterdam@krk.nl) | +31 (0) 20 440 00 00

---

*Disclaimer: All measurements are approximate. No rights can be derived from them. All images, drawings, and texts shown in this brochure are indicative and may also depict optional features and layout variations. No rights can be derived from any impressions.*